



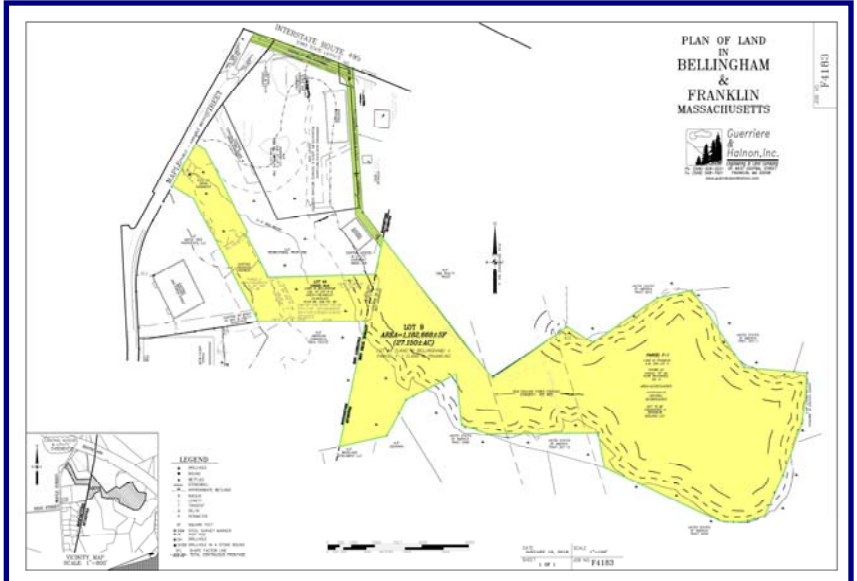
## 27 ACRES BELLINGHAM/FRANKLIN

# 27.15 Acres for Sale

## Maple St. and I-495 at Maple St. Industrial Park



- 27.15 Acres Zoned Industrial
- See Existing Conditions, p 3-4
- 200' Frontage on Maple St.
- Excellent visibility from I-495
- Access through Maple Street Industrial Park existing drive
- Planned intersection improvements at Maple St. (recently widened) & Rt. 140
- Approximately 12 Buildable Acres
- Town water, natural gas, private septic
- **\$1.295M**



Contact:  
Dusty Burke | [dusty@acresco.com](mailto:dusty@acresco.com) | 508-735-6378  
Bobby Burke | [bobby@acresco.com](mailto:bobby@acresco.com) | 508-479-5294

**AMERICAN COMMERCIAL REAL ESTATE**



# 27 ACRES BELLINGHAM/FRANKLIN

AMERICAN COMMERCIAL REAL ESTATE

## 27.15 Acres for Sale Maple St. and I-495 at Maple St. Industrial Park



AMERICAN COMMERCIAL REAL ESTATE

Contact:  
Dusty Burke | [dusty@acreco.com](mailto:dusty@acreco.com) | 508-735-6378  
Bobby Burke | [bobby@acreco.com](mailto:bobby@acreco.com) | 508-479-5294

Information presented herein is from sources deemed reliable. However, no warranty can be made as to the accuracy of this information, which is presented subject to prior sale, rental, or withdrawal from the market without notice.

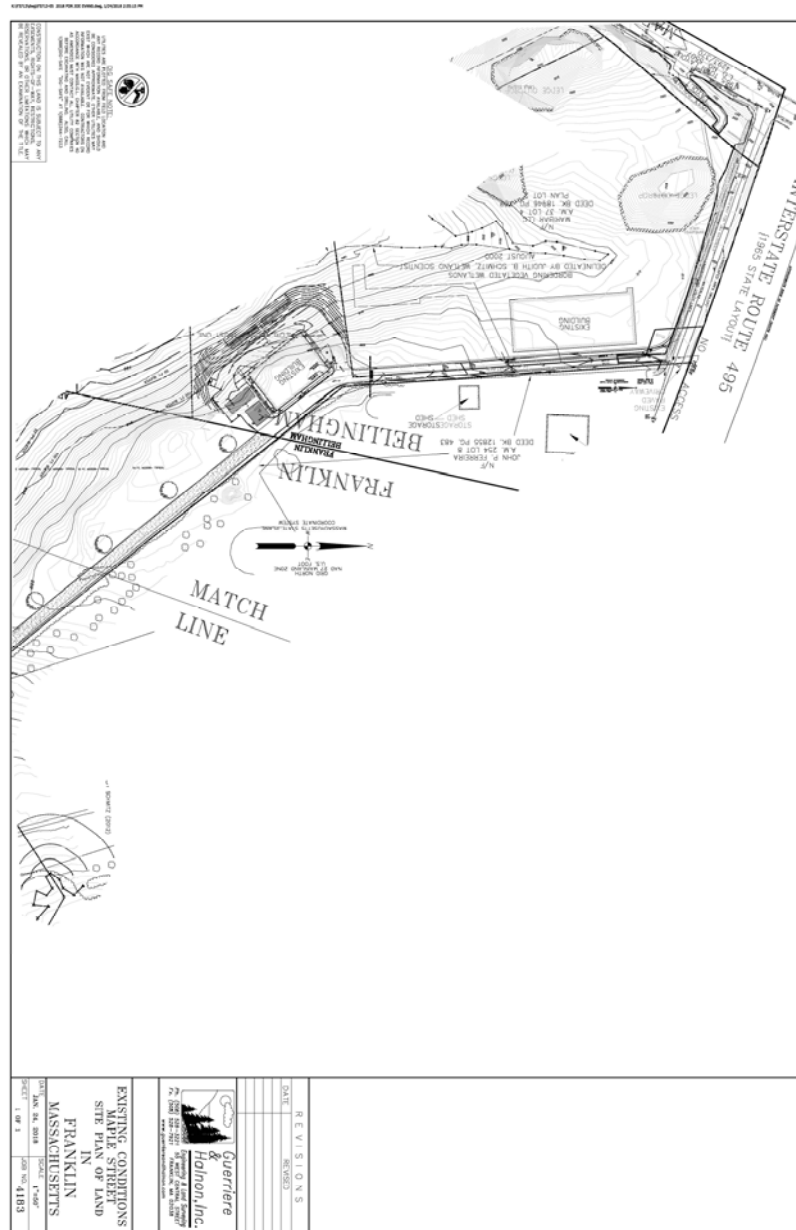


# 27 ACRES BELLINGHAM/FRANKLIN

AMERICAN COMMERCIAL REAL ESTATE

## 27.15 Acres for Sale Maple St. and I-495 at Maple St. Industrial Park

### EXISTING CONDITIONS, PAGE 1



**AMERICAN COMMERCIAL REAL ESTATE**

Contact:  
Dusty Burke | [dusty@acreco.com](mailto:dusty@acreco.com) | 508-735-6378  
Bobby Burke | [bobby@acreco.com](mailto:bobby@acreco.com) | 508-479-5294

Information presented herein is from sources deemed reliable. However, no warranty can be made as to the accuracy of this information, which is presented subject to prior sale, rental, or withdrawal from the market without notice.

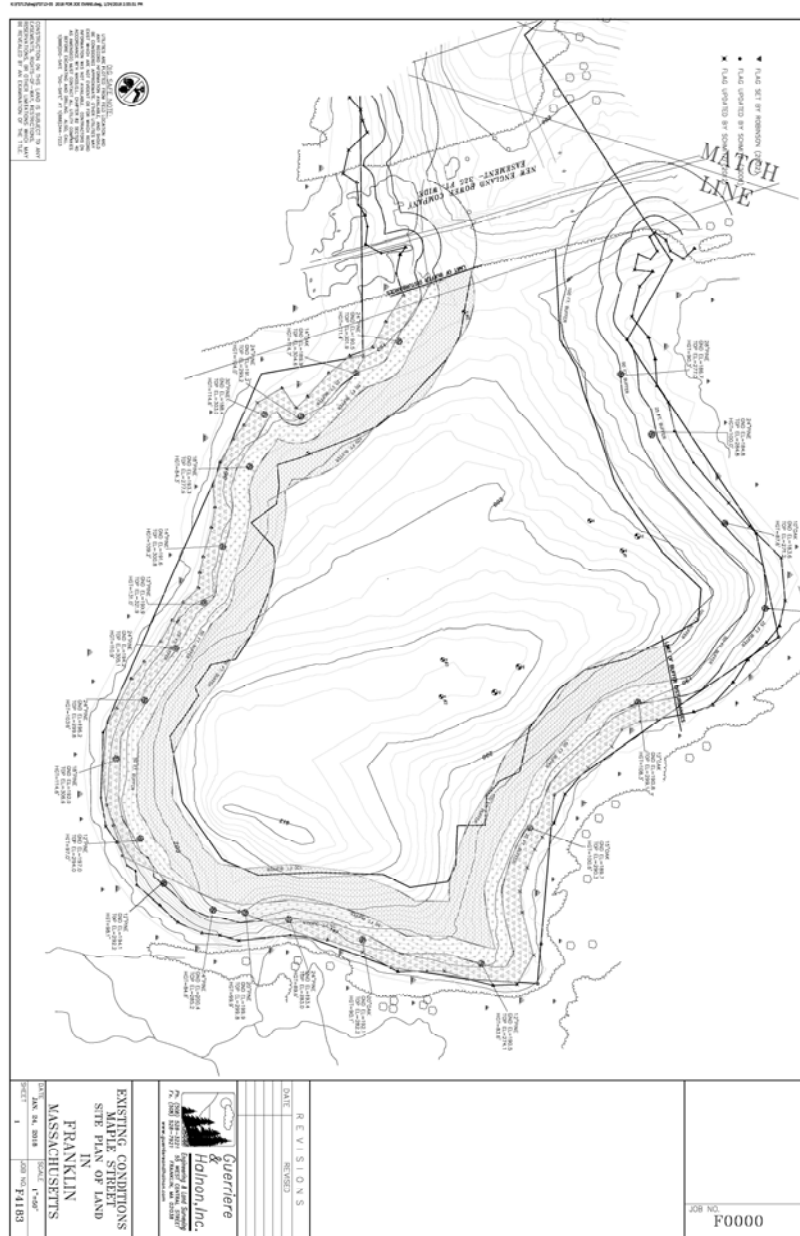


# 27 ACRES BELLINGHAM/FRANKLIN

AMERICAN COMMERCIAL REAL ESTATE

## 27.15 Acres for Sale Maple St. and I-495 at Maple St. Industrial Park

### EXISTING CONDITIONS, PAGE 2



AMERICAN COMMERCIAL REAL ESTATE

Contact:  
Dusty Burke | [dusty@acreco.com](mailto:dusty@acreco.com) | 508-735-6378  
Bobby Burke | [bobby@acreco.com](mailto:bobby@acreco.com) | 508-479-5294

Information presented herein is from sources deemed reliable. However, no warranty can be made as to the accuracy of this information, which is presented subject to prior sale, rental, or withdrawal from the market without notice.