



300-340 E. CENTRAL ST. (RT. 140)
FRANKLIN, MA

Franklin, MA

Proposed 156,000 SF Shopping Center
Join Big Y, Advance Auto, Aubuchon, Dollar Tree,
The New Franklin Bowladrome & More
OCTOBER, 2015



**PROPOSED
CENTRAL SQUARE
300-340 E. Central St.**

**Engineer: Jones & Beach
Developer: Franklin MA Properties, LLC**

Dusty Burke - dusty@acreco.com
508-735-6378
Bobby Burke - bobby@acreco.com
508-479-5294

**AMERICAN COMMERCIAL
REAL ESTATE**

306 Maple Street
Bellingham, MA 02019

Phone: 508-966-2699
Fax: 508-861-0537
www.acreco.com

American Commercial Real Estate is pleased to offer for lease the proposed Central Square, Franklin's newest shopping center of 156,000 SF, including the existing Big Y World Class Supermarket, to be built at the site of the Ficco's Bowladrome and former Keigan Chevrolet. Join Advance Auto, Dollar Tree, Aubuchon Hardware, Anytime Fitness, Chatila's Bakery, the new Franklin Bowladrome, The Learning Experience, Valvoline, Great Clips and many more here at 300-340 E. Central St. and its high traffic retail corridor, minutes from I-495. Neighbors include CVS, Shaw's Supermarket, Bob's Stores, McDonald's, dense multi-family housing, Dean College and Franklin Town Hall. Occupancy Date est. October, 2015.

- Concept: Redevelopment of Ficco's Bowladrome & Keigan Chevrolet
- Occupancy: October 1, 2015
- GLA: 156,000 SF
- Available: 37,500 SF, sub dividable to 1,000 SF
- In-line, end caps, free-standing
- Drive-thru available
- New light to be installed
- ADT: 21,000 +/-

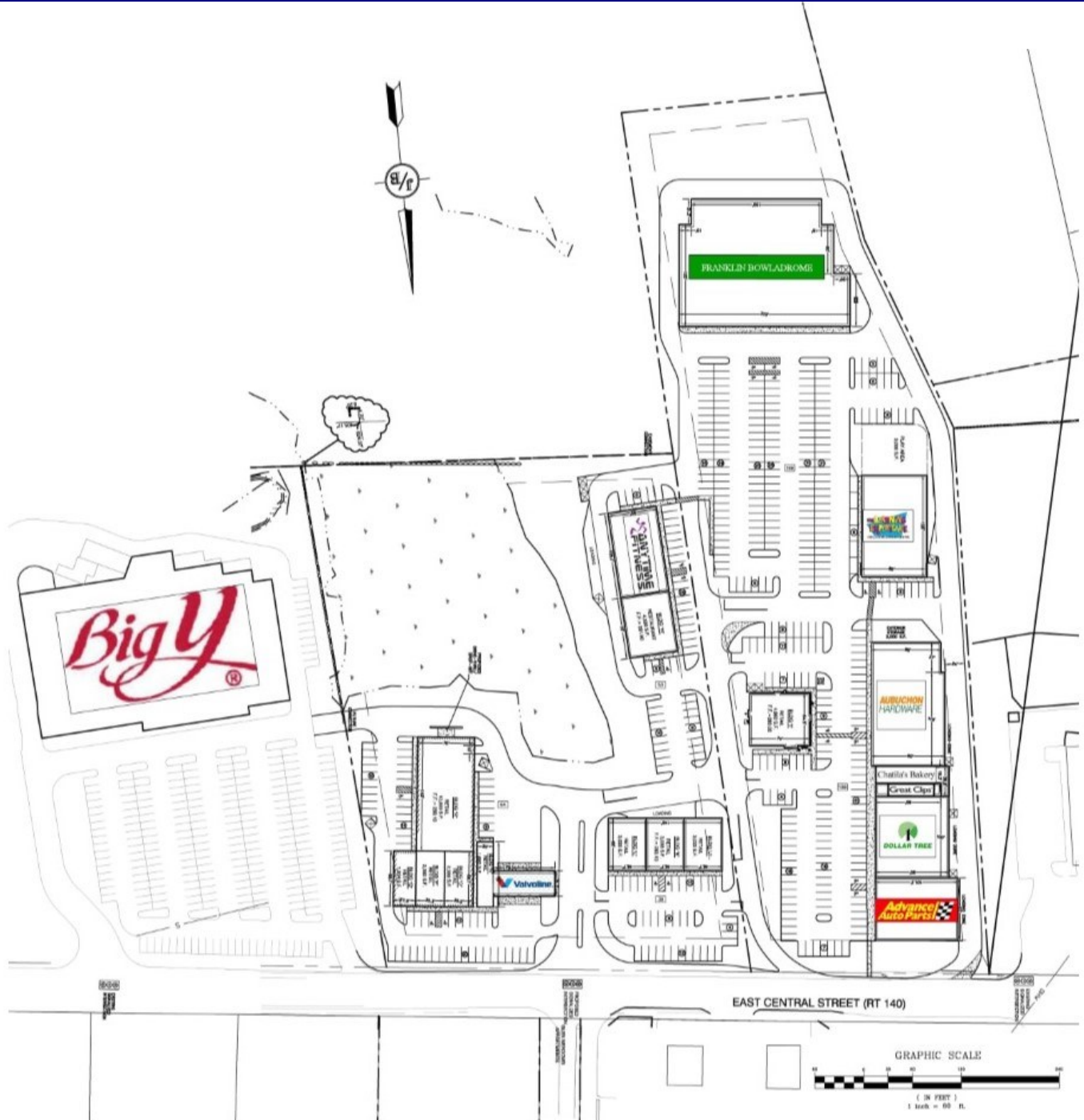
	1-Mile	3-Mile	5-Mile
Total Population	8,219	31,197	65,654
Median HH Income	\$76,239	\$91,808	\$93,329



300-340 E. CENTRAL ST. (RT. 140)
FRANKLIN, MA

AMERICAN COMMERCIAL REAL ESTATE

Franklin, MA
Proposed 156,000 SF Shopping Center
CENTRAL SQUARE



ACRE | 306 Maple St., Bellingham, MA 02019 | Dusty Burke 508-735-6378 | Bobby Burke 508-479-5294