



755 GAR HIGHWAY (RT. 6).  
SWANSEA, MA

AMERICAN COMMERCIAL REAL ESTATE

**NEW CONSTRUCTION 7,221 SF RETAIL BLDG**  
*755 GAR Highway (Rt. 6) and Michael Ave. at Swansea Mall Drive*  
*2,021 SF (Dividable) Available for Lease*

- Concept: Existing property to be re-developed.
- Location: 755 GAR Highway, Rt. 6 at Michael Ave., adjacent to Milford St, Swansea Mall Drive and I-195
- Drive-thru available
- GLA: 7,221 SF
- Dimensions: 135' 4" X 55'
- Available: 2,021 SF, Dividable
- Delivery: March 1, 2019
- Full Utilities
- Parking: 48 spaces
- Developer: Thurloe Kensington
- Architect: Landry Architects

For more information contact

Dusty Burke - [dusty@acresco.com](mailto:dusty@acresco.com)

508-735-6378

Bobby Burke - [bobby.acresco@gmail.com](mailto:bobby.acresco@gmail.com)

508-479-5294

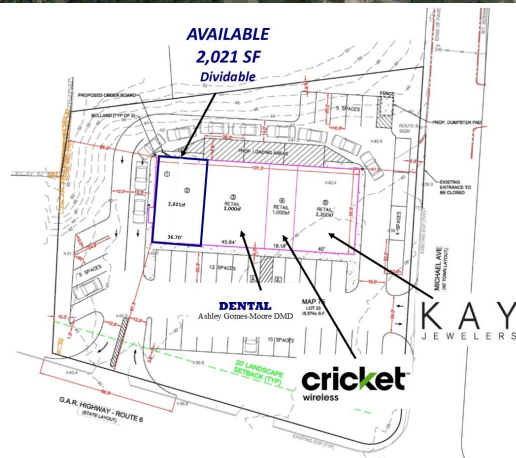
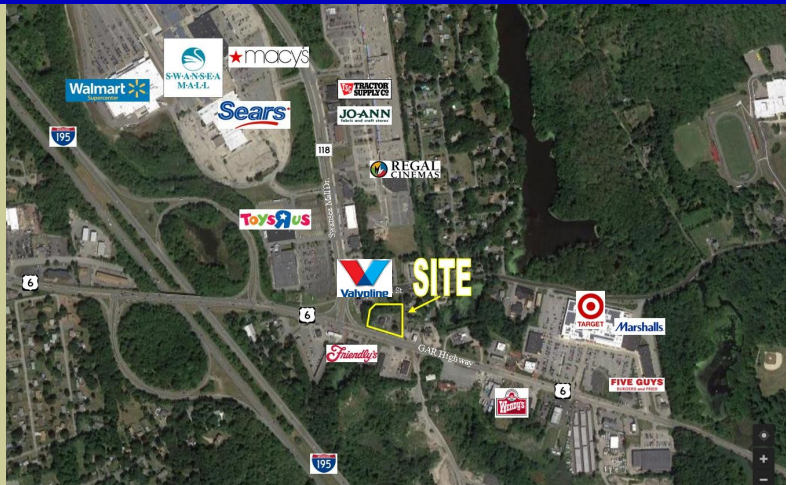
**AMERICAN COMMERCIAL REAL  
ESTATE**

306 Maple Street  
Bellingham, MA 02019

Phone: 508-966-2699

Fax: 508-861-0537

[www.acresco.com](http://www.acresco.com)

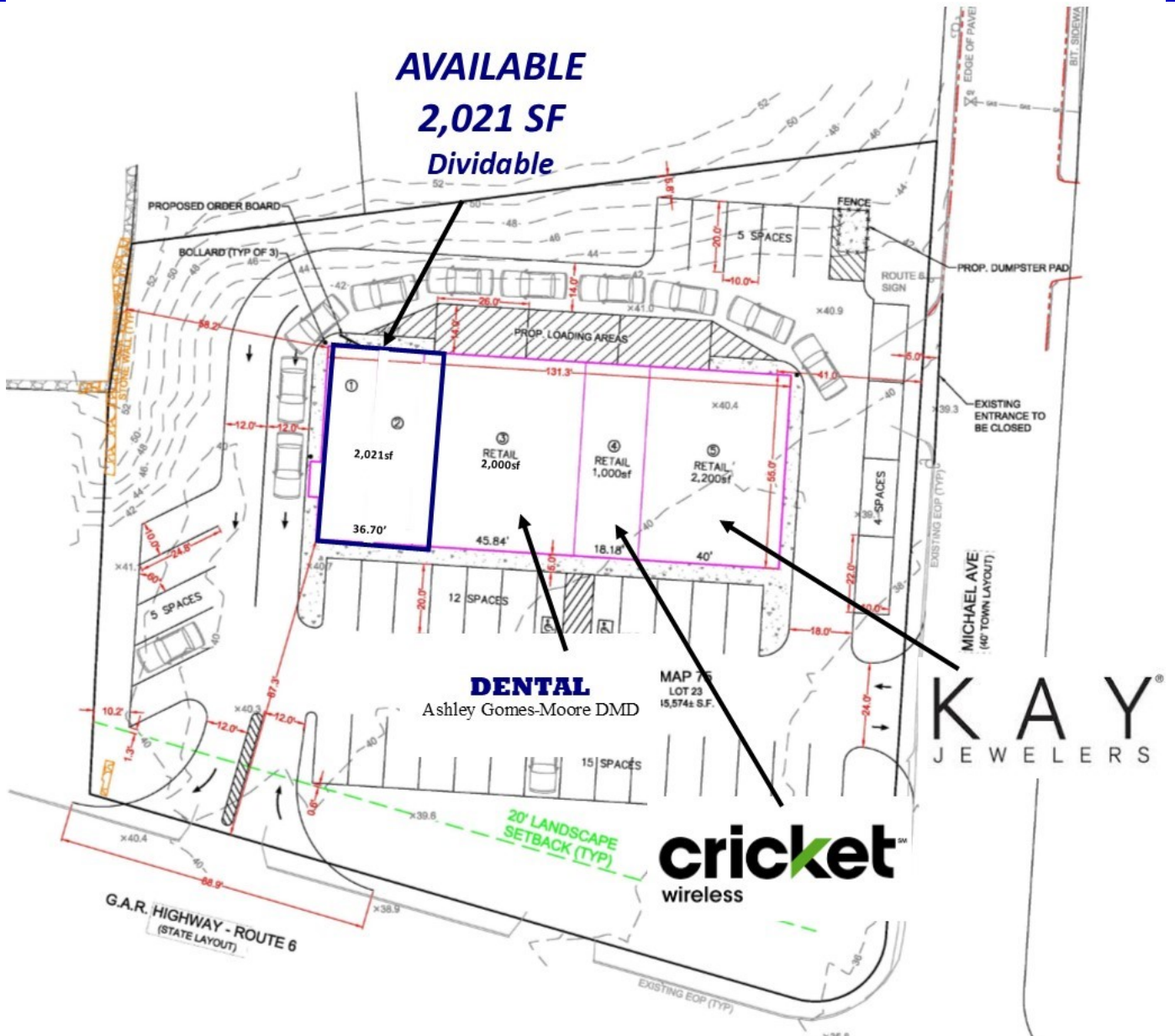




755 GAR HIGHWAY (RT. 6).  
SWANSEA, MA

AMERICAN COMMERCIAL REAL ESTATE

**NEW CONSTRUCTION 7,221 SF RETAIL BLDG**  
*755 GAR Highway (Rt. 6) and Michael Ave. at Swansea Mall Drive*  
*2,021 SF (Dividable) Available For Lease*



For more information contact  
Dusty Burke - [dusty@acreco.com](mailto:dusty@acreco.com)

508-735-6378

Bobby Burke - [bobby.acreco@gmail.com](mailto:bobby.acreco@gmail.com)

508-479-5294