

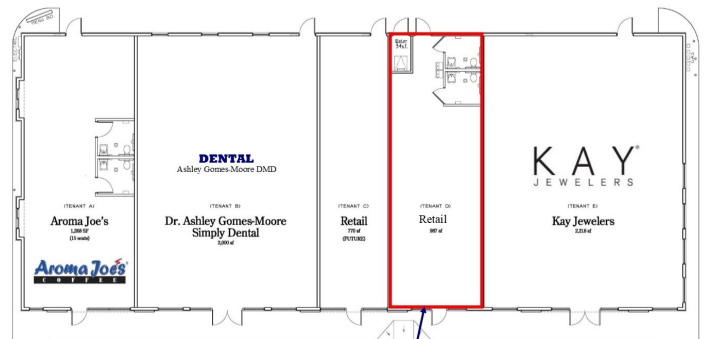
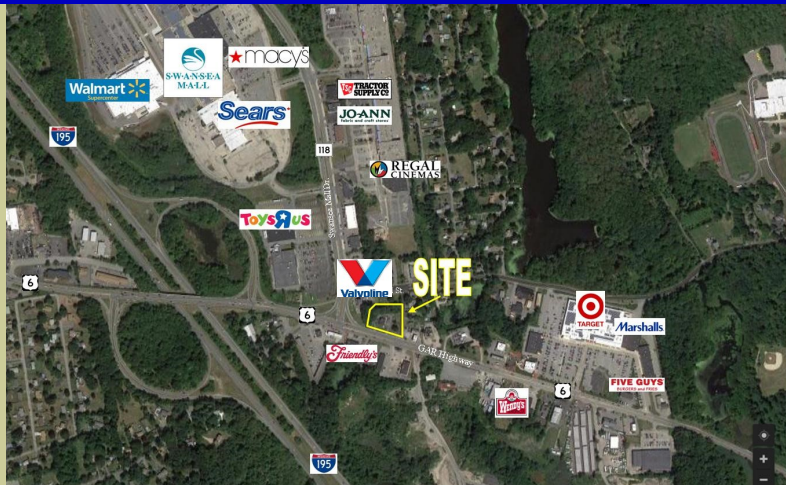


755 GAR HIGHWAY (RT. 6).  
SWANSEA, MA

AMERICAN COMMERCIAL REAL ESTATE

**NEW CONSTRUCTION 7,221 SF RETAIL BLDG**  
*755 GAR Highway (Rt. 6) and Michael Ave. at Swansea Mall Drive*  
*987SF Available for Lease*

- Concept: Existing property to be re-developed.
- Location: 755 GAR Highway, Rt. 6 at Michael Ave., adjacent to Milford St, Swansea Mall Drive and I-195
- Drive-thru available
- GLA: 7,221 SF
- Dimensions: 135' 4" X 55'
- Available: 987 SF
- Delivery: August, 2019
- Full Utilities
- Parking: 48 spaces
- Developer: Thurloe Kensington
- Architect: Landry Architects



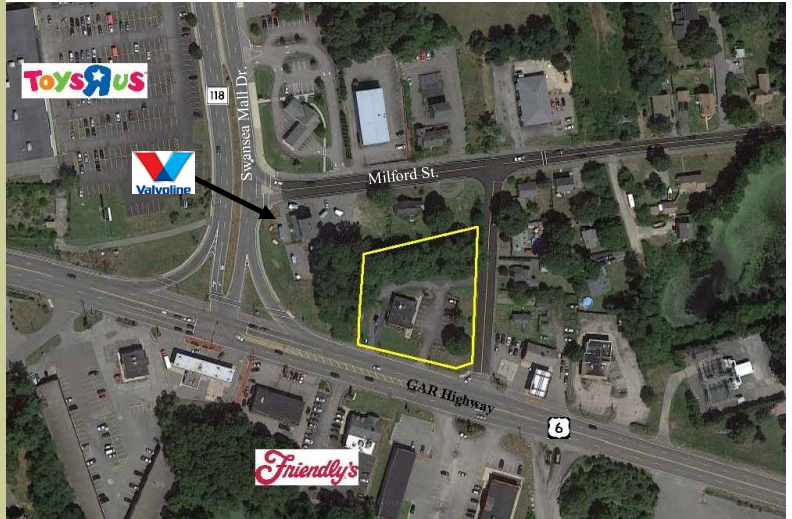
LEASE PLAN  
SCALE: 1/8" = 1'-0"  
TOTAL FLOOR GROSS AREA = 1,211 SF

AVAILABLE  
987 SF

For more information contact  
Dusty Burke - [dusty@acreco.com](mailto:dusty@acreco.com)  
508-735-6378  
Bobby Burke - [bobby.acreco@gmail.com](mailto:bobby.acreco@gmail.com)  
508-479-5294

AMERICAN COMMERCIAL REAL  
ESTATE

306 Maple Street  
Bellingham, MA 02019  
Phone: 508-966-2699  
Fax: 508-861-0537  
[www.acreco.com](http://www.acreco.com)



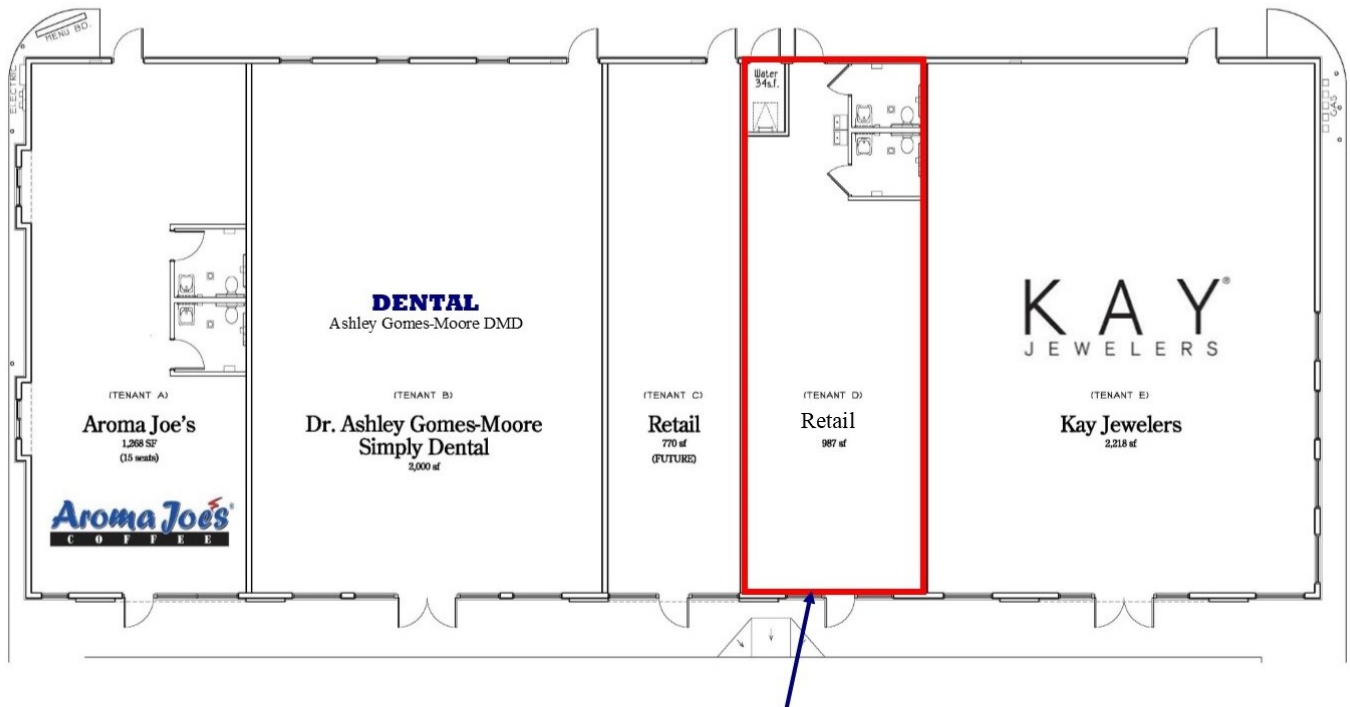
Information presented herein is from sources deemed reliable. However, no warranty can be made as to the accuracy of this information, which is presented subject to prior sale, rental, or withdrawal from the market without notice.



755 GAR HIGHWAY (RT. 6).  
SWANSEA, MA

AMERICAN COMMERCIAL REAL ESTATE

**NEW CONSTRUCTION 7,221 SF RETAIL BLDG**  
*755 GAR Highway (Rt. 6) and Michael Ave. at Swansea Mall Drive*  
*987 SF Available For Lease*



 **LEASE PLAN**  
SCALE: 1/8" = 1'-0"  
TOTAL FLOOR GROSS AREA = 1,211 s.f.

**AVAILABLE  
987 SF**

For more information contact

Dusty Burke - [dusty@acreco.com](mailto:dusty@acreco.com)

508-735-6378

Bobby Burke - [bobby.acreco@gmail.com](mailto:bobby.acreco@gmail.com)

508-479-5294