



755 GAR HIGHWAY (RT. 6).
SWANSEA, MA

AMERICAN COMMERCIAL REAL ESTATE

NEW CONSTRUCTION 7,221 SF RETAIL BLDG
755 GAR Highway (Rt. 6) and Michael Ave. at Swansea Mall Drive
2,021 SF (Dividable) Available for Lease

- Concept: Existing property to be re-developed.
- Location: 755 GAR Highway, Rt. 6 at Michael Ave., adjacent to Milford St, Swansea Mall Drive and I-195
- Drive-thru available
- GLA: 7,221 SF
- Dimensions: 135' 4" X 55'
- Available: 2,021 SF, Dividable
- Delivery: December 1, 2018
- Full Utilities
- Parking: 48 spaces
- Developer: Thurloe Kensington
- Architect: Landry Architects

For more information contact

Dusty Burke - dusty@acresco.com

508-735-6378

Bobby Burke - bobby.acresco@gmail.com

508-479-5294

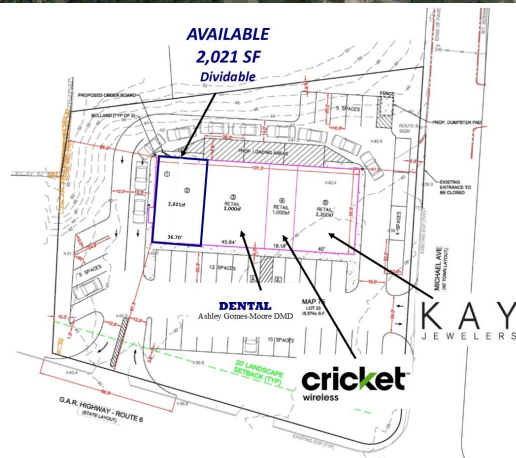
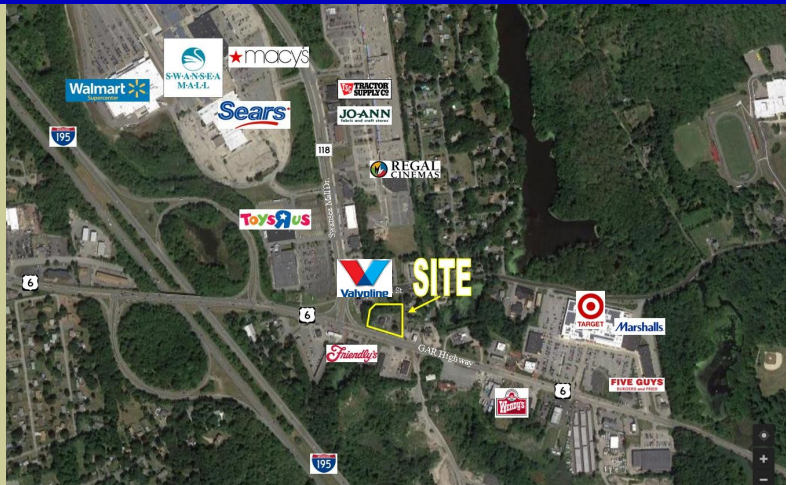
**AMERICAN COMMERCIAL REAL
ESTATE**

306 Maple Street
Bellingham, MA 02019

Phone: 508-966-2699

Fax: 508-861-0537

www.acresco.com

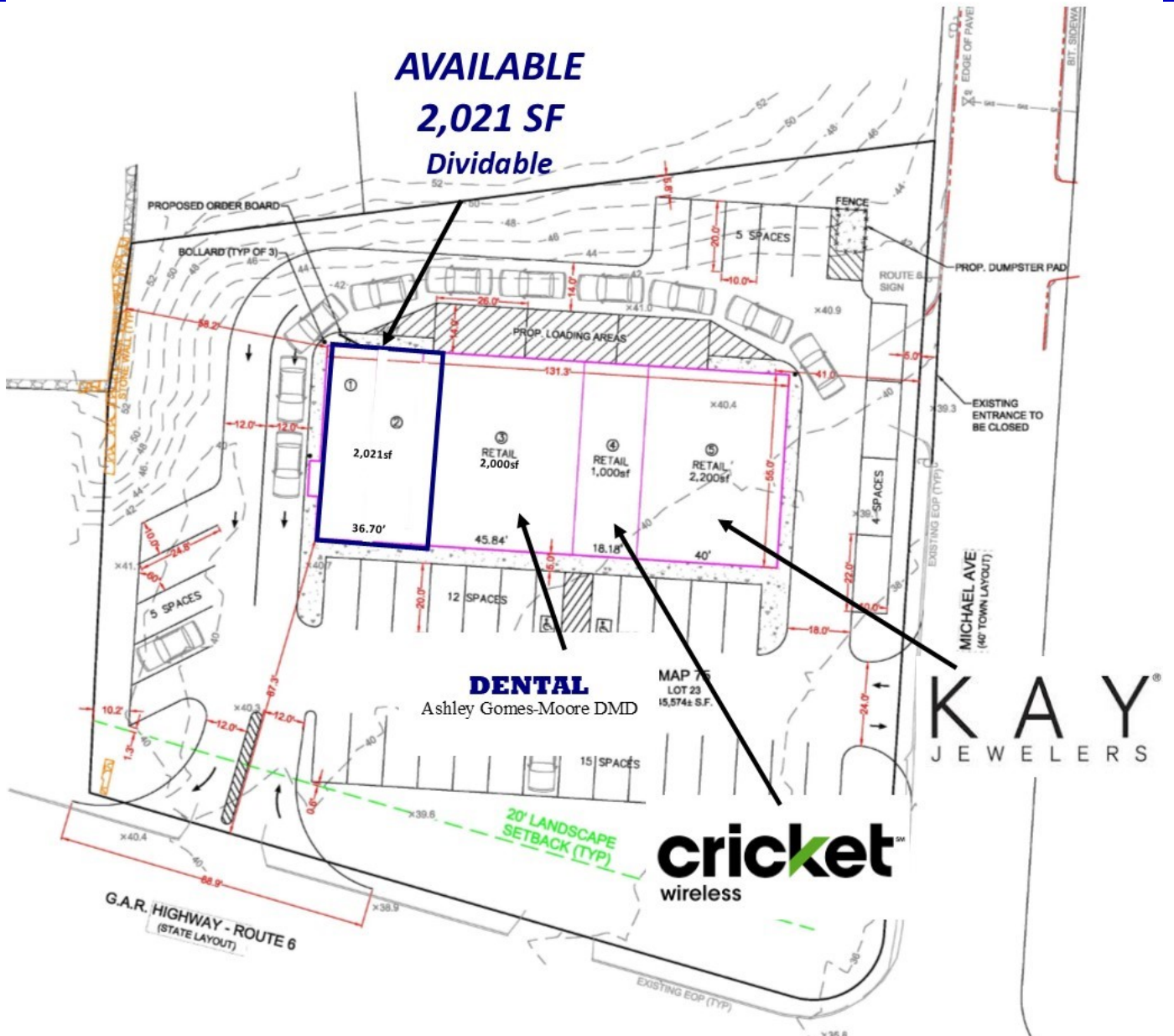




755 GAR HIGHWAY (RT. 6).
SWANSEA, MA

AMERICAN COMMERCIAL REAL ESTATE

NEW CONSTRUCTION 7,221 SF RETAIL BLDG
755 GAR Highway (Rt. 6) and Michael Ave. at Swansea Mall Drive
2,021 SF (Dividable) Available For Lease



For more information contact
Dusty Burke - dusty@acreco.com

508-735-6378

Bobby Burke - bobby.acreco@gmail.com

508-479-5294