



Cornerstone Square (Exit 83 on I-495) Boston Rd., Rt. 110 (Littleton Rd.), Westford MA

3 Spaces Available:

6 Cornerstone Square – 3,100 SF Next to Market Basket

9 Cornerstone Square – 2,360 SF Next to Great Clips

11 Cornerstone Square – 810 SF Next to River Bend & Company



AMERICAN COMMERCIAL REAL ESTATE
50 LEDGEVIEW WAY #2415, WRENTHAM, MASSACHUSETTS 02093
TEL: (508) 735-6378 | E-MAIL: dusty@acreco.com | www.acreco.com

Contact:

Dusty Burke
508-735-6378
dusty@acreco.com

Dusty Burke III
508-735-5976
dusty3@acreco.com

Information presented herein is from sources deemed reliable. However, no warranty can be made as to the accuracy of this information, which is presented subject to prior sale, rental, or withdrawal from the market without notice.



Cornerstone Square

Boston Rd., Rt. 110 (Littleton Rd.), Westford MA

Features:

- Anchors: Market Basket, Marshalls, HomeGoods, Panera, Petco, and Ewiva Trattoria
- GLA: 238,410 SF on 31 Acres
- ADT: 100,000+
- Local Employers: Kadant Inc., Net Scout Systems, Ribbon Communications Inc., Westford Regency Inn & Conference Center, and many more.

Contact:

Dusty Burke
508-735-6378
dusty@acreco.com

Dusty Burke III
508-735-5976
dusty3@acreco.com



Contact:

Dusty Burke
508-735-6378
dusty@acreco.com

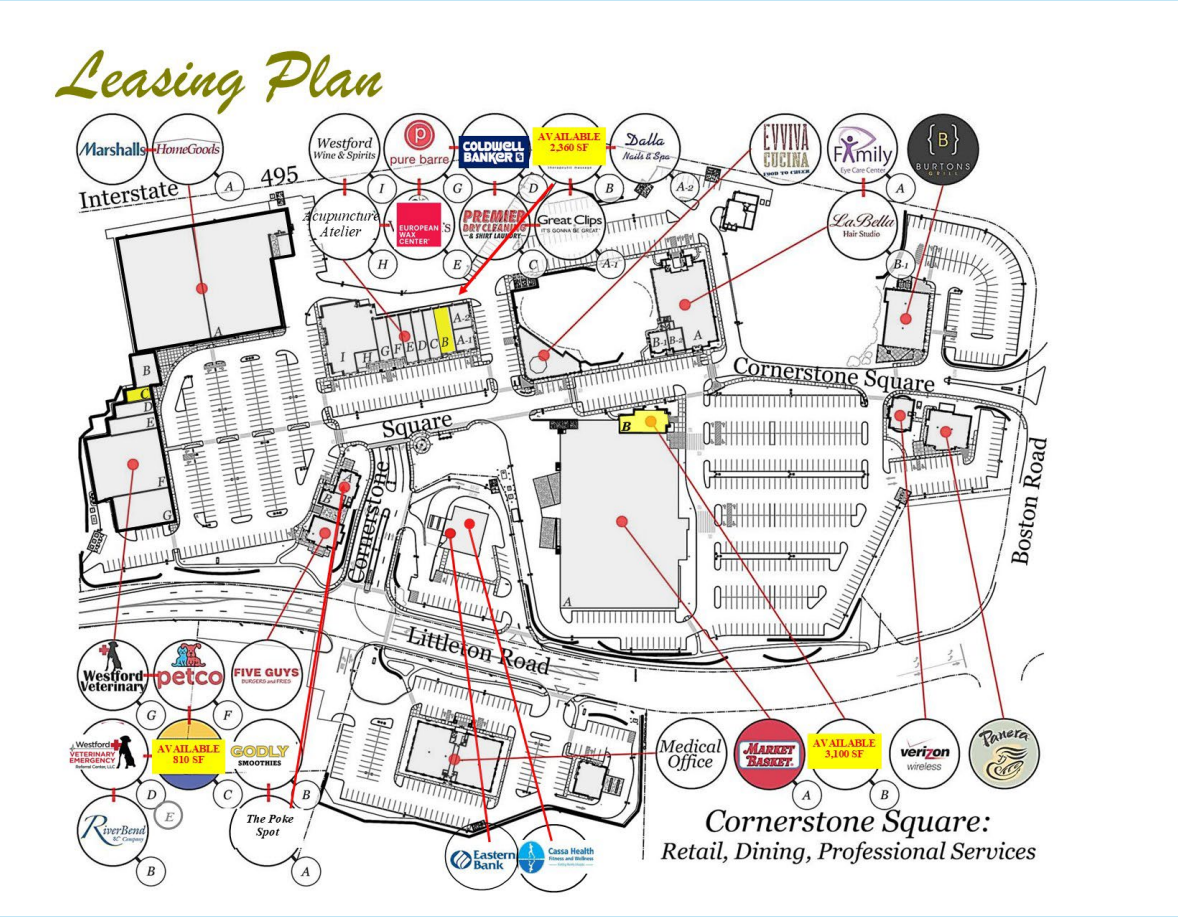
Dusty Burke III
508-735-5976
dusty3@acreco.com



	3 Miles	5 Miles	10 Miles
	23,292	67,888	377,043
	\$157,344	\$142,047	\$106,326

Cornerstone Square

Boston Rd., Rt. 110 (Littleton Rd.), Westford MA



AMERICAN COMMERCIAL REAL ESTATE
 50 LEDGEVIEW WAY #2415, WRENTHAM, MASSACHUSETTS 02093
 TEL: (508) 735-6378 | E-MAIL: dusty@acreco.com | www.acreco.com

Contact:

Dusty Burke
 508-735-6378
dusty@acreco.com

Dusty Burke III
 508-735-5976
dusty3@acreco.com

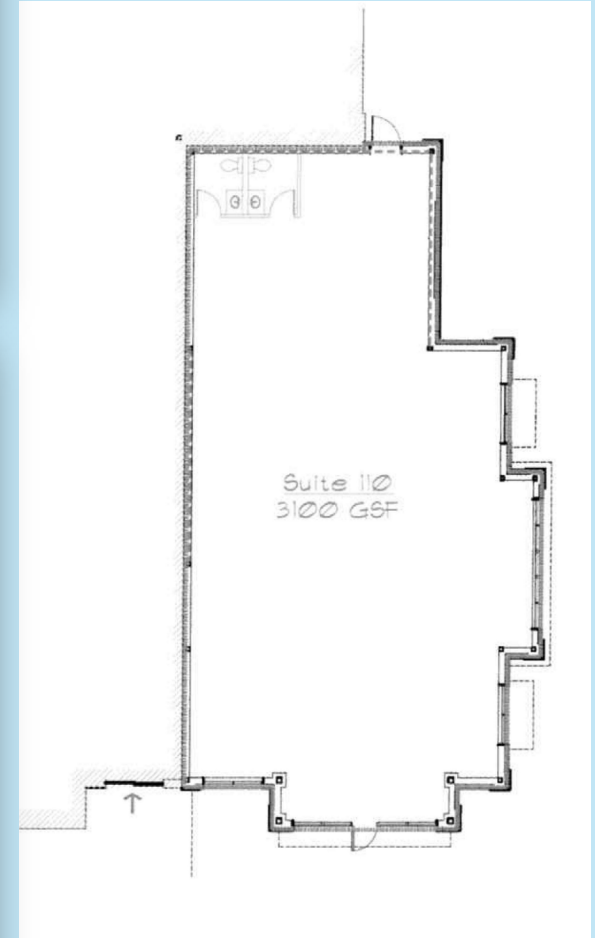
Information presented herein is from sources deemed reliable. However, no warranty can be made as to the accuracy of this information, which is presented subject to prior sale, rental, or withdrawal from the market without notice.

Cornerstone Square

6 Cornerstone Square, Westford MA



- Available Space:
- Suite 110
 - Former Xfinity Retail Store
 - 3,100 SF Retail/ Office Space
 - Next to Market Basket



AMERICAN COMMERCIAL REAL ESTATE
50 LEDGEVIEW WAY #2415, WRENTHAM, MASSACHUSETTS 02093
TEL: (508) 735-6378 | E-MAIL: dusty@acreco.com | www.acreco.com

Contact:

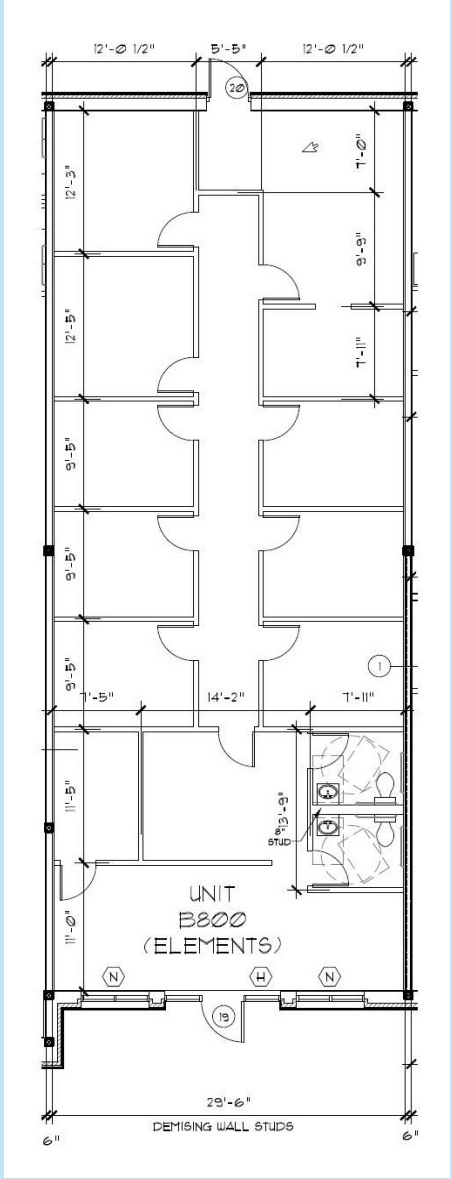
Dusty Burke
508-735-6378
dusty@acreco.com

Dusty Burke III
508-735-5976
dusty3@acreco.com

Cornerstone Square

9 Cornerstone Square, Westford MA

- Available Space:
- Suite B800
 - Former Elements Massage
 - 2,360 SF Retail/ Office Space
 - Next to Great Clips



AMERICAN COMMERCIAL REAL ESTATE
 50 LEDGEVIEW WAY #2415, WRENTHAM, MASSACHUSETTS 02093
 TEL: (508) 735-6378 | E-MAIL: dusty@acreco.com | www.acreco.com

Contact:

Dusty Burke
 508-735-6378
dusty@acreco.com

Dusty Burke III
 508-735-5976
dusty3@acreco.com

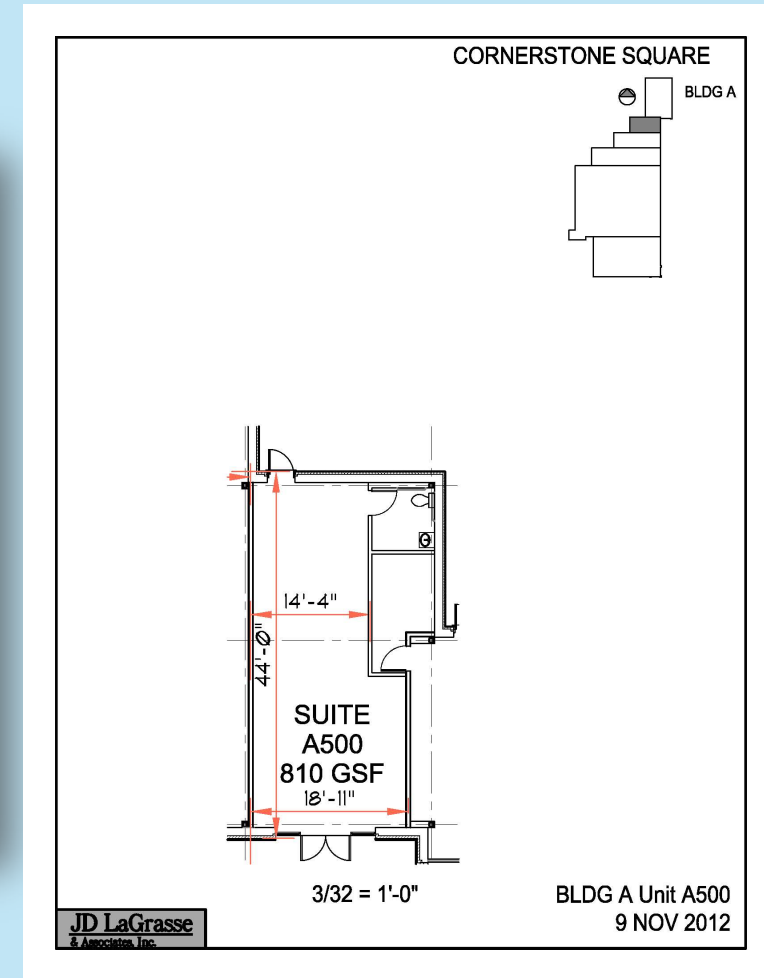
Information presented herein is from sources deemed reliable. However, no warranty can be made as to the accuracy of this information, which is presented subject to prior sale, rental, or withdrawal from the market without notice.

Cornerstone Square

11 Cornerstone Square, Westford MA

Available Space:

- Suite A500
- Former Cell Phone Repair Store
- 810 SF Retail/ Office Space
- Next River Bend & Company



AMERICAN COMMERCIAL REAL ESTATE
50 LEDGEVIEW WAY #2415, WRENTHAM, MASSACHUSETTS 02093
TEL: (508) 735-6378 | E-MAIL: dusty@acreco.com | www.acreco.com

Contact:

Dusty Burke
508-735-6378
dusty@acreco.com

Dusty Burke III
508-735-5976
dusty3@acreco.com